

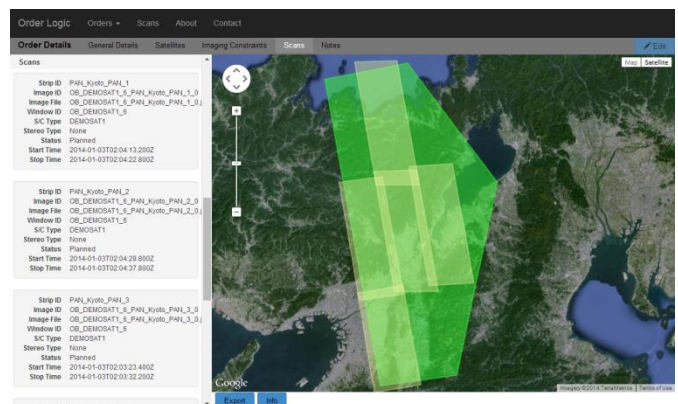
Orbit Logic to Deliver Collection Planning Software for US Government Program

GREENBELT, MD (March 10, 2015) – Orbit Logic announced today that they will provide their Collection Planning & Analysis Workstation (CPAW) software and Order Logic software product and associated engineering services to a US government customer for an undisclosed program. CPAW will be deployed for operational planning while Order Logic will be used for task order management and plan visualization.

Orbit Logic's Collection Planning & Analysis Workstation (CPAW) software solves the difficult problem of satellite imagery collection planning through a spacecraft simulator coupled with scheduling algorithms that generate valid and optimized high fidelity imagery collection plans for use in satellite operations, analysis, or imagery ordering. CPAW covers everything from contact scheduling and recorder management to power and antenna modeling while accounting for satellite maneuverability, system availability, timing constraints, and sensor capabilities. Planning can be completely manual, fully automated, or anywhere in between to plan for anything from a single image on a single satellite to extensive order decks collected by a constellation of multiple EO and SAR spacecraft with varying capabilities.

Index	Task Order	Strip	Score	Status	Imaging Start Time	Duration	Max CC	Stop Area	Max ONA	End ONA	Max Incidence	Max Incidence @ AP
1	EO_Accumulate	EO_Accumulate_PAN_0	239	Inactive	2011-05-21T01:14:28.000Z	N	7.0	0	0	0	2.802	2.802
2	EO_Accumulate	EO_Accumulate_PAN_1	234	Inactive	2011-05-21T01:14:22.000Z	N	8.0	0	0	0	3.900	4.000
3	EO_Ant	EO_Ant_PAN_0	362	Inactive	2011-05-21T01:14:42.000Z	N	23.4	13	200	1787	3.418	3.312
4	EO_Ant	EO_Ant_PAN_1	360	Inactive	2011-05-21T01:14:43.000Z	N	23.4	14	200	1789	2.883	2.488
5	EO_Ant	EO_Ant_PAN_2	360	Inactive	2011-05-21T01:14:43.000Z	N	23.4	12	200	1788	2.354	2.018
6	EO_Ant	EO_Ant_PAN_3	360	Inactive	2011-05-21T01:14:43.000Z	N	23.4	17	200	1789	2.604	2.212
7	EO_Ant	EO_Ant_PAN_4	362	Inactive	2011-05-21T01:14:43.000Z	N	24.0	0	0	0	26.18	26.063
8	EO_Beam	EO_Beam_PAN_0	214	Inactive	2011-05-21T01:14:48.000Z	N	50.4	0	40	824	18.275	20.797
9	EO_Cham	EO_Cham_PAN_0	180	Inactive	2011-05-21T01:14:28.000Z	N	3.4	0	42	288	19.849	19.948
10	EO_Detector	EO_Detector_PAN_0	268	Inactive	2011-05-21T01:14:55.000Z	N	8	0	40	720	18.828	19.828
11	EO_Detector	EO_Detector_PAN_1	182	Inactive	2011-05-21T01:14:28.000Z	N	8.2	11	33	489	23.091	22.489
12	EO_Fup	EO_Fup_PAN_0	373	Inactive	2011-05-21T01:14:48.000Z	N	23	0	200	1739	3.728	4.837
13	EO_Fup	EO_Fup_PAN_1	376	Inactive	2011-05-21T01:14:48.000Z	N	31.6	1	200	1739	28.894	29.388
14	EO_Fup	EO_Fup_PAN_2	377	Inactive	2011-05-21T01:14:48.000Z	N	23	0	200	1739	2.447	2.902
15	EO_Fup	EO_Fup_PAN_3	372	Inactive	2011-05-21T01:14:47.000Z	N	23	7	200	1739	2.421	2.284
16	EO_Fup	EO_Fup_PAN_4	373	Inactive	2011-05-21T01:14:47.000Z	N	23	8	200	1739	2.889	2.284
17	EO_Fup	EO_Fup_PAN_5	371	Inactive	2011-05-21T01:14:48.000Z	N	23	8	200	1739	3.738	2.548

CPAW Tabular Planning GUI



Order Logic Web Application

Order Logic is an add-on to CPAW for web-based management and tracking of imaging requests. Order Logic provides visualization of imaging plans, allows users to understand when new images of their targets are likely to be available, and tracks fulfillment status of requests for new imaging. Logins and configurable permissions ensure that users are limited to the order management capabilities and data for which they are authorized.

Orbit Logic (www.orbitlogic.com) specializes in mission planning and scheduling solutions for aerospace and geospatial intelligence. Orbit Logic's operationally proven COTS products create better plans faster with fewer resources for all mission phases. Orbit Logic engineering services are available to configure, customize, and integrate Orbit Logic's mobile, web-based, and desktop applications to provide turn-key operational solutions that leverage the latest available technologies to meet customer goals and exceed their expectations.

For additional information regarding this press release contact Ella Herz at 301-982-6234 or via email at ella.herz@orbitlogic.com